



Doc No:	MMWI-201
Revision No:	2
Document Date:	10/21/2011
Revised Date:	03/16/2020
Revised By:	Shane Walet
Approved by:	Tommy Breaux
Page:	Page 1 of 22

ASSEMBLY AND DISASSEMBLY OF M&M CANISTER GUARD® (1-75 TO 2-75)

1. M & M CANISTER® GUARD DISASSEMBLY

First, the canister must be removed from the valve body. To do this, follow removal procedures for the valve in which the canister is located. Once the canister has been removed from the valve body, the canister may be disassembled. The following tools will be needed:

- a) Snap-Ring Pliers
- b) Rubber Mallet
- c) Screw Driver

Note: This work instruction is applicable for the following standard canister sizes:

- 1-75
- 2-00
- 2-25
- 2-50
- 2-75





Doc No:	MMWI-201
Revision No:	2
Document Date:	10/21/2011
Revised Date:	03/16/2020
Revised By:	Shane Walet
Approved by:	Tommy Breaux
Page:	Page 2 of 22

ASSEMBLY AND DISASSEMBLY OF M&M CANISTER GUARD® (1-75 TO 2-75)

1.1 To disassemble the canister, the following steps must be taken:

1. With the canister in the closed position, use snap-ring plier to open the cage/seat fastener at the gap located on the fastener.



2. Slide the cage/seat fastener out of the cage/seat grooves on the canister and remove the top seat from the cage.





M&M International, LLC
Work Instruction

Doc No:	MMWI-201
Revision No:	2
Document Date:	10/21/2011
Revised Date:	03/16/2020
Revised By:	Shane Walet
Approved by:	Tommy Breaux
Page:	Page 3 of 22

ASSEMBLY AND DISASSEMBLY OF M&M CANISTER GUARD® (1-75 TO 2-75)

3. Remove the ball from the cage by pulling the ball upwards and away from the lower seat.





M&M International, LLC
Work Instruction

Doc No:	MMWI-201
Revision No:	2
Document Date:	10/21/2011
Revised Date:	03/16/2020
Revised By:	Shane Walet
Approved by:	Tommy Breaux
Page:	Page 4 of 22

ASSEMBLY AND DISASSEMBLY OF M&M CANISTER GUARD® (1-75 TO 2-75)

4. Remove the stem link from the cage window.



5. Remove the lower seat from the cage bore.





M&M International, LLC
Work Instruction

Doc No: MMWI-201

Revision No: 2

Document Date: 10/21/2011

Revised Date: 03/16/2020

Revised By: Shane Walet

Approved by: Tommy Breaux

Page: Page 5 of 22

ASSEMBLY AND DISASSEMBLY OF M&M CANISTER GUARD® (1-75 TO 2-75)

6. Remove the spring from the cage bore.



7. Remove all O-Rings and Teflon Rings.
8. After cleaning, inspecting, and replacing any worn parts, the canister can be reassembled.

2. M & M CANISTER GUARD® ASSEMBLY

First, gather all the components necessary to assemble the canister. To make sure all of the proper parts for assembly have been acquired, check the parts list for the specific valve type into which the canister will be installed. To do this, go to www.mmvalve.com and enter the serial number of the valve being assembled into the product search feature. By doing this you should be provided with an option to view the parts list for the valve being assembled, which should include the parts for the canister that corresponds to the valve. The following is a general list of all the components needed:

1. Cage
2. Spring
3. Lower Seat
4. 2 Stem Links (Two for Dual Window Canisters)
5. Ball
6. Upper Seat



Doc No:	MMWI-201
Revision No:	2
Document Date:	10/21/2011
Revised Date:	03/16/2020
Revised By:	Shane Walet
Approved by:	Tommy Breaux
Page:	Page 6 of 22

ASSEMBLY AND DISASSEMBLY OF M&M CANISTER GUARD® (1-75 TO 2-75)

7. Cage/ Seat Fastener
8. Lower Seat O'Ring
9. Upper and Lower Seat Teflon Rings
10. Upper Seat O-Ring
11. Upper Seat Back-up Ring
12. Canister Seal



2.1 Once all the components necessary to assemble the canister have been compiled, the following steps must be followed:

1. Visually inspect all components, ensuring to replace any worn or damaged component(s) When reassembling a used canister, all seals/Teflons should be replaced regardless of wear or damage.

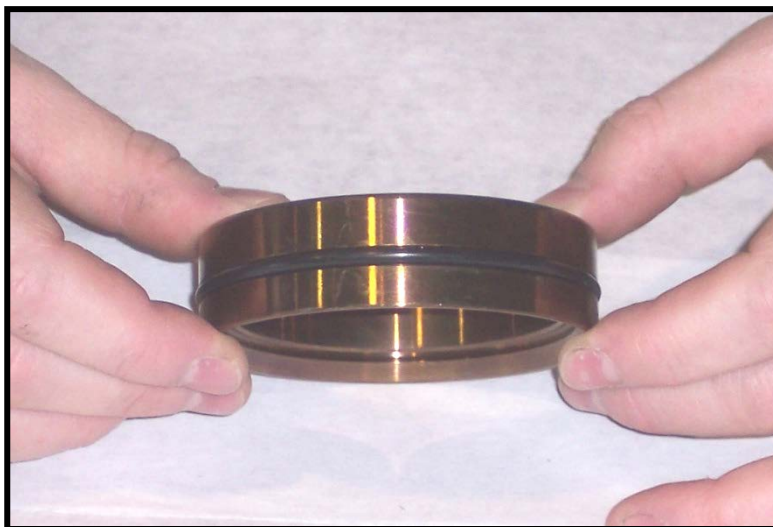
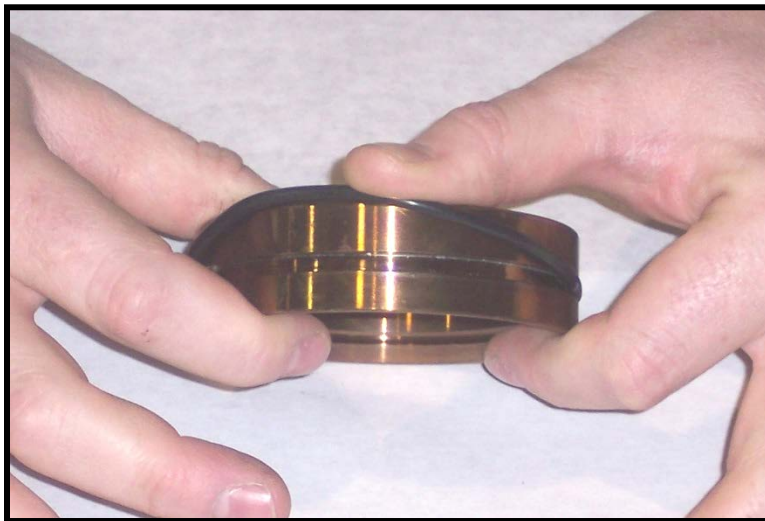


M&M International, LLC
Work Instruction

Doc No:	MMWI-201
Revision No:	2
Document Date:	10/21/2011
Revised Date:	03/16/2020
Revised By:	Shane Walet
Approved by:	Tommy Breaux
Page:	Page 7 of 22

ASSEMBLY AND DISASSEMBLY OF M&M CANISTER GUARD® (1-75 TO 2-75)

- Roll the lower seat o-ring into the lower seat o-ring groove.





M&M International, LLC
Work Instruction

Doc No:	MMWI-201
Revision No:	2
Document Date:	10/21/2011
Revised Date:	03/16/2020
Revised By:	Shane Walet
Approved by:	Tommy Breaux
Page:	Page 8 of 22

ASSEMBLY AND DISASSEMBLY OF M&M CANISTER GUARD® (1-75 TO 2-75)

3. Insert the lower seat Teflon ring into the lower seat Teflon groove.



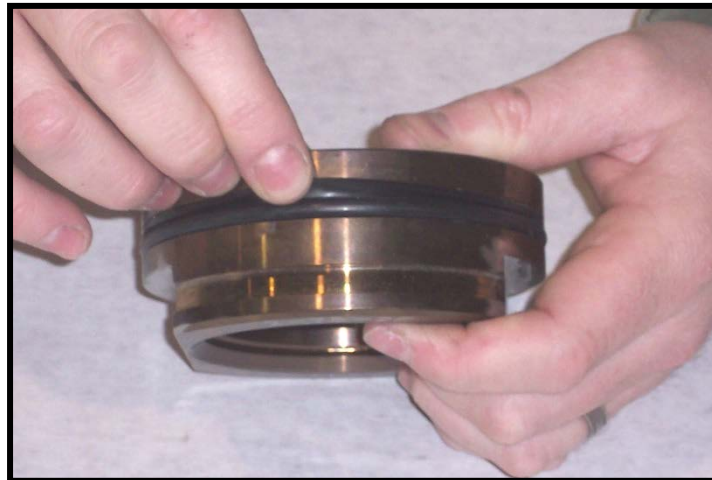


M&M International, LLC
Work Instruction

Doc No:	MMWI-201
Revision No:	2
Document Date:	10/21/2011
Revised Date:	03/16/2020
Revised By:	Shane Walet
Approved by:	Tommy Breaux
Page:	Page 9 of 22

ASSEMBLY AND DISASSEMBLY OF M&M CANISTER GUARD® (1-75 TO 2-75)

4. Roll the upper seat O-Ring into the upper seat O-Ring groove.





M&M International, LLC
Work Instruction

Doc No:	MMWI-201
Revision No:	2
Document Date:	10/21/2011
Revised Date:	03/16/2020
Revised By:	Shane Walet
Approved by:	Tommy Breaux
Page:	Page 10 of 22

ASSEMBLY AND DISASSEMBLY OF M&M CANISTER GUARD® (1-75 TO 2-75)

5. Insert the upper seat back-up ring into the upper seat O-Ring groove.

Note: The upper seat back-up ring should be located above the upper seat O-Ring in the same groove.

Note: Ensure that the concave side of the upper seat back-up ring rests on top of /facing the top of the upper seat O-Ring.





M&M International, LLC
Work Instruction

Doc No: MMWI-201

Revision No: 2

Document Date: 10/21/2011

Revised Date: 03/16/2020

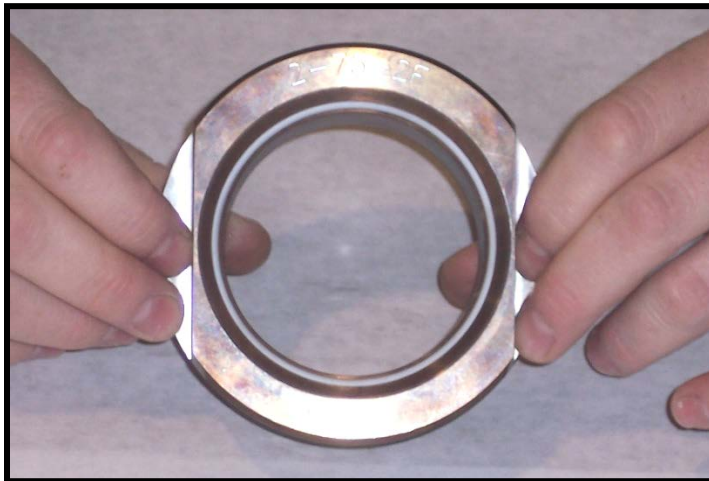
Revised By: Shane Walet

Approved by: Tommy Breaux

Page: Page 11 of 22

ASSEMBLY AND DISASSEMBLY OF M&M CANISTER GUARD® (1-75 TO 2-75)

6. Insert the upper seat Teflon Ring into the upper seat Teflon groove.





M&M International, LLC
Work Instruction

Doc No:	MMWI-201
Revision No:	2
Document Date:	10/21/2011
Revised Date:	03/16/2020
Revised By:	Shane Walet
Approved by:	Tommy Breaux
Page:	Page 12 of 22

ASSEMBLY AND DISASSEMBLY OF M&M CANISTER GUARD® (1-75 TO 2-75)

7. With the upper seat on a flat surface and the Teflon ring facing upward, place the ball on the upper seat. Ensure that the internal diameter of the ball is perpendicular to the top seat and that the Teflon ring is completely covered by the outside diameter of the ball. Using a rubber mallet, tap the ball with moderate force to ensure that the upper seat Teflon ring is seated.



8. With the lower seat on a flat surface and the Teflon groove facing upward, place the ball on the lower seat. Ensure that the internal diameter of the ball is perpendicular to the lower seat and that the Teflon ring is completely covered by the outside diameter of the ball. Using a rubber mallet, tap the ball with moderate force to ensure that the lower seat Teflon ring is seated.





M&M International, LLC
Work Instruction

Doc No:	MMWI-201
Revision No:	2
Document Date:	10/21/2011
Revised Date:	03/16/2020
Revised By:	Shane Walet
Approved by:	Tommy Breaux
Page:	Page 13 of 22

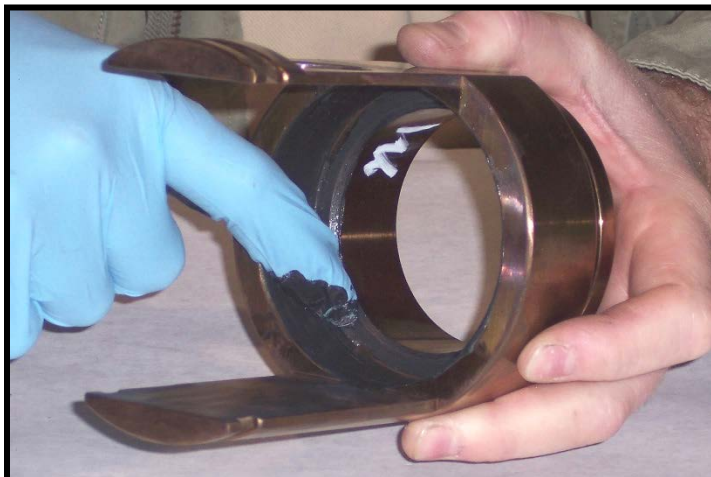
ASSEMBLY AND DISASSEMBLY OF M&M CANISTER GUARD® (1-75 TO 2-75)

9. Insert the canister seal into the canister seal groove located on the nose of the cage.

Note: The canister seal should have lips facing upwards and towards the top of the canister.



10. Lubricate the cage bore.



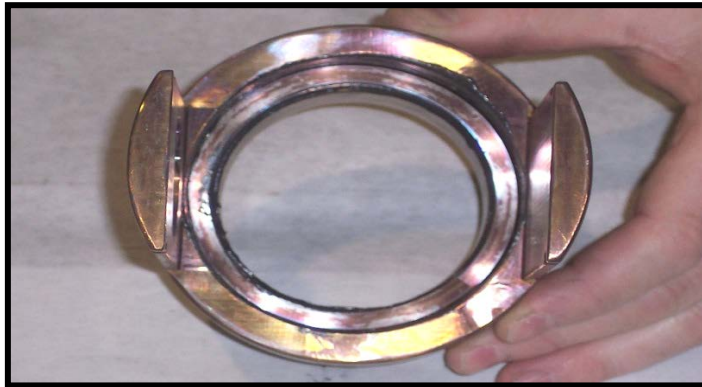


M&M International, LLC
Work Instruction

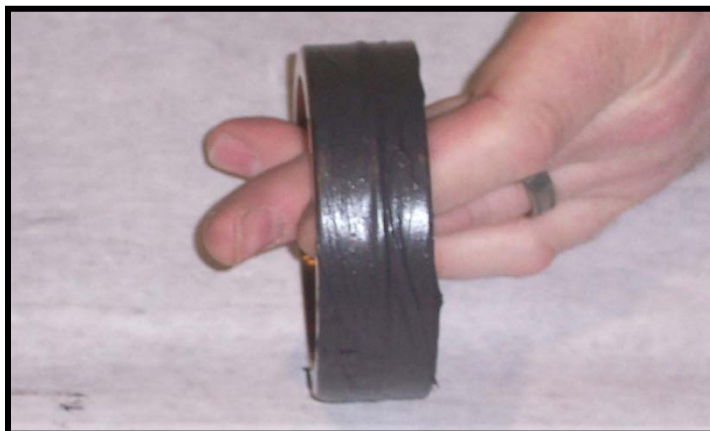
Doc No:	MMWI-201
Revision No:	2
Document Date:	10/21/2011
Revised Date:	03/16/2020
Revised By:	Shane Walet
Approved by:	Tommy Breaux
Page:	Page 14 of 22

ASSEMBLY AND DISASSEMBLY OF M&M CANISTER GUARD® (1-75 TO 2-75)

11. Insert the spring into the cage bore.



12. Lubricate the lower seat





M&M International, LLC
Work Instruction

Doc No:	MMWI-201
Revision No:	2
Document Date:	10/21/2011
Revised Date:	03/16/2020
Revised By:	Shane Walet
Approved by:	Tommy Breaux
Page:	Page 15 of 22

ASSEMBLY AND DISASSEMBLY OF M&M CANISTER GUARD® (1-75 TO 2-75)

13. Insert the lower seat into the cage bore on top of the spring.

Note: The lower seat Teflon ring should be facing upward.

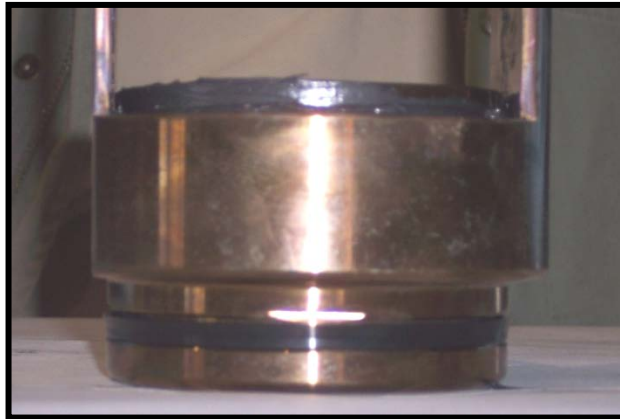




M&M International, LLC
Work Instruction

Doc No:	MMWI-201
Revision No:	2
Document Date:	10/21/2011
Revised Date:	03/16/2020
Revised By:	Shane Walet
Approved by:	Tommy Breaux
Page:	Page 16 of 22

ASSEMBLY AND DISASSEMBLY OF M&M CANISTER GUARD® (1-75 TO 2-75)



14. Insert the stem link vertically into the cage window. If assembling a dual window canister, insert one stem link into each of the two windows.





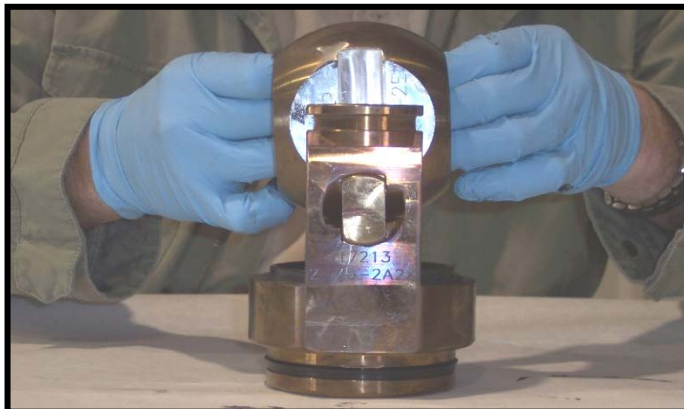
M&M International, LLC
Work Instruction

Doc No:	MMWI-201
Revision No:	2
Document Date:	10/21/2011
Revised Date:	03/16/2020
Revised By:	Shane Walet
Approved by:	Tommy Breaux
Page:	Page 17 of 22

ASSEMBLY AND DISASSEMBLY OF M&M CANISTER GUARD® (1-75 TO 2-75)



- Slide the ball in between the cage legs ensuring that the ball slot aligns with and engages the back portion of the stem link(s)





M&M International, LLC
Work Instruction

Doc No:	MMWI-201
Revision No:	2
Document Date:	10/21/2011
Revised Date:	03/16/2020
Revised By:	Shane Walet
Approved by:	Tommy Breaux
Page:	Page 18 of 22

ASSEMBLY AND DISASSEMBLY OF M&M CANISTER GUARD® (1-75 TO 2-75)



16. Insert the cage/seat fastener into the cage/seat fastener groove on the upper seat.

Note: The cage/seat fastener gap should be located approximately 90° from the flats on either side of the upper seat.





M&M International, LLC
Work Instruction

Doc No: MMWI-201

Revision No: 2

Document Date: 10/21/2011

Revised Date: 03/16/2020

Revised By: Shane Walet

Approved by: Tommy Breaux

Page: Page 19 of 22

ASSEMBLY AND DISASSEMBLY OF M&M CANISTER GUARD® (1-75 TO 2-75)



17. Place the upper seat on top of the cage legs. Align the upper seat flats with the cage legs.

Note: The cage legs should make contact with the upper seat flats and the bottom face of the cage/seat fastener.





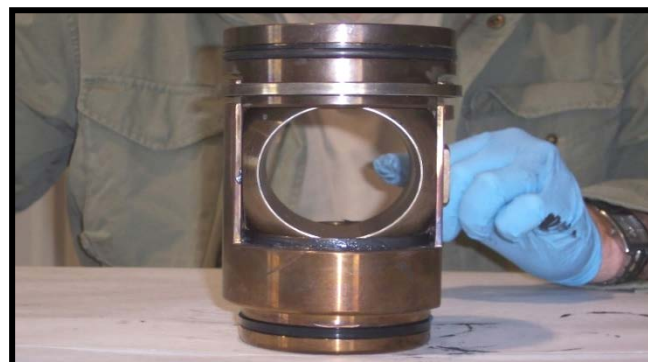
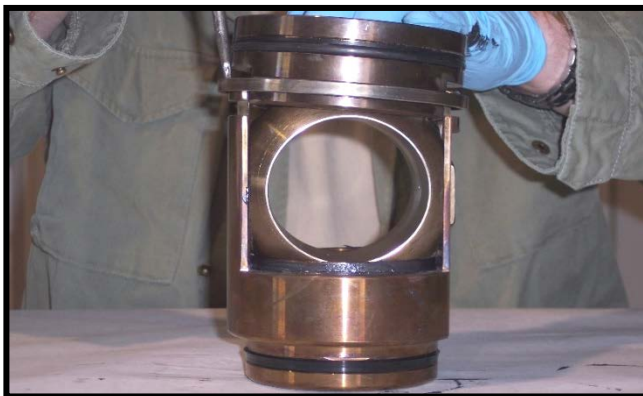
M&M International, LLC
Work Instruction

Doc No:	MMWI-201
Revision No:	2
Document Date:	10/21/2011
Revised Date:	03/16/2020
Revised By:	Shane Walet
Approved by:	Tommy Breaux
Page:	Page 20 of 22

ASSEMBLY AND DISASSEMBLY OF M&M CANISTER GUARD® (1-75 TO 2-75)

18. With a screwdriver, pry the cage/seat fastener away from the upper seat allowing the cage/seat fastener to engage the cage leg groove.

Note: This may require tapping the top of the upper seat with a rubber mallet to ensure full engagement of the cage/seat fastener.





Doc No:	MMWI-201
Revision No:	2
Document Date:	10/21/2011
Revised Date:	03/16/2020
Revised By:	Shane Walet
Approved by:	Tommy Breaux
Page:	Page 21 of 22

ASSEMBLY AND DISASSEMBLY OF M&M CANISTER GUARD® (1-75 TO 2-75)



19. Lubricate the entire canister.



20. The canister is now ready to be placed into its corresponding valve.



M&M International, LLC
Work Instruction

**ASSEMBLY AND DISASSEMBLY OF M&M
CANISTER GUARD® (1-75 TO 2-75)**

Doc No:	MMWI-201
Revision No:	2
Document Date:	10/21/2011
Revised Date:	03/16/2020
Revised By:	Shane Walet
Approved by:	Tommy Breaux
Page:	Page 22 of 22

3. Assembly Documentation

When applicable, M&M International Form *MM-201 M&M Canister Guard® Assembly Checklist (1-75 to 2-75)* can be used in conjunction with this work instruction to validate the assembly activities.